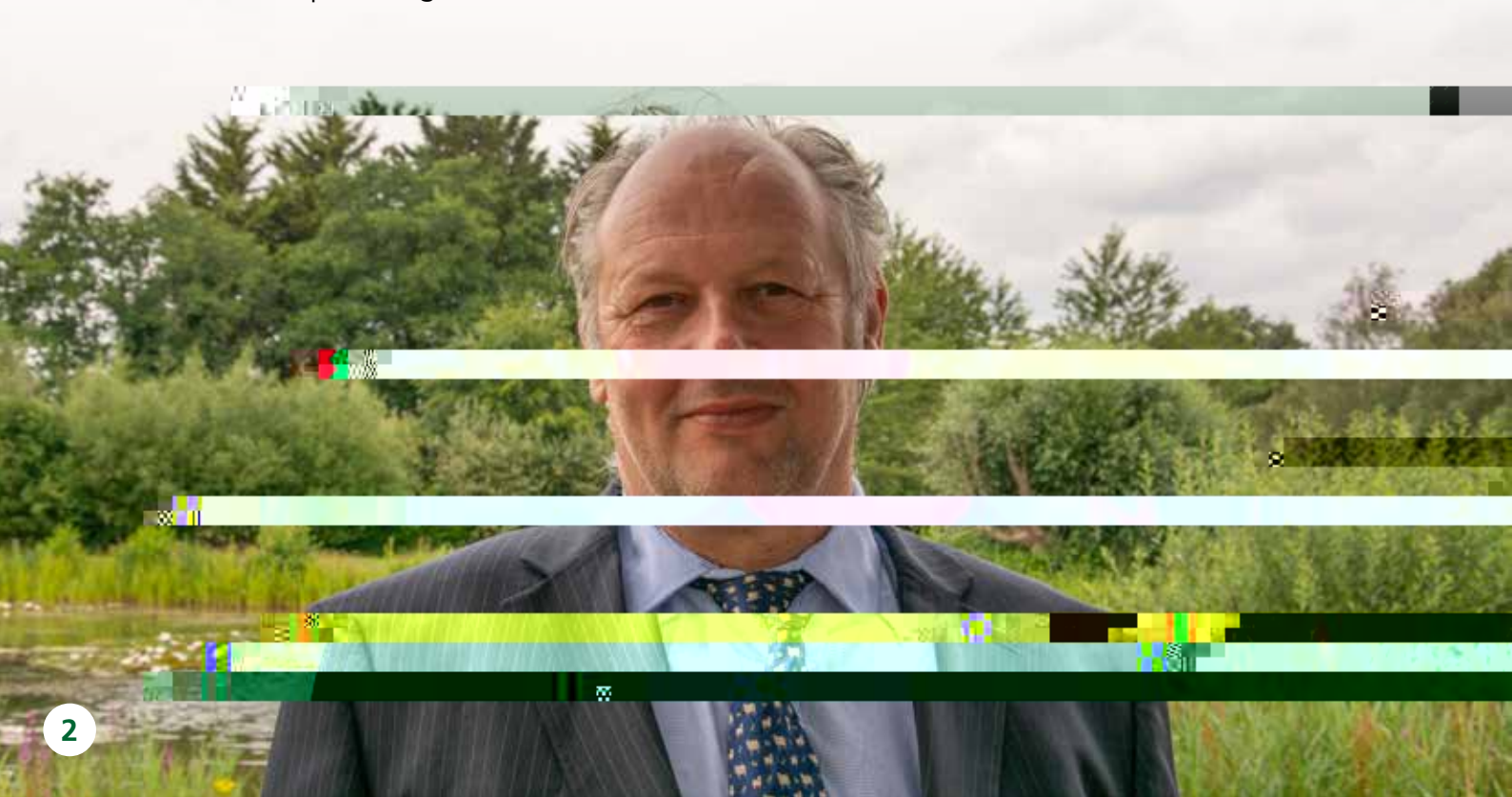


WELCOME

The NFU offers a fantastic legal service through our internal and external legal professionals working together for the benefit of our members. Our in-house legally qualified advisers are totally committed and dedicated to the work carried out on behalf of members, coupled with the specialist expertise of our carefully selected NFU Legal Panel Firms that have a good understanding of the issues facing the farming and growing community.

I am proud to be the Chairman of the NFU Legal Board offering financial support to our Legal Assistance Scheme (LAS) subscribers when facing hardships, and in making important decisions affecting their businesses and livelihoods.

Nick Hamer | NFU Legal Board Chairman



NFU LEGAL POLICY

In addition to our unrivalled legal service offering, the NFU has an in-house team of lawyers who advise and support its policy teams lobbying on behalf of our members.

The Legal Affairs Team provides legal advice to NFU co-operators, directors, staff and members covering a huge range of legal topics, encompassing all of the policy areas within the NFU, and across all sectors.

The team fights NFU legal cases for the industry and produces information and guidance for members on legal issues relevant to their farming and growing businesses.

I am very proud of the NFU legal offer - providing a comprehensive, professional, and united service to members when they most need our support.

Andrew Clark | NFU Director of Policy



SPECIALIST ADVICE

Our qualified team of legal and technical advisers form part of NFU CallFirst - a free* telephone helpline service exclusive to NFU members. They can provide professional advice and guidance on a comprehensive range of issues, from employment law, health and safety, and planning, to more complex legal matters; the team are there to support and help you run your business more effectively.

If more in depth advice is needed, your query will be referred to one of the NFU Legal Panel Firms within your region. Have your membership number ready so our team can answer your query as quickly and effectively as possible.

Lines are open Monday to Friday, 8am to 5pm (excluding bank holidays).

* 03 0

01 02.



NFU LEGAL ASSISTANCE SCHEME

"The standout service for me is the Legal Assistance Scheme. For the past 25 years we've been a member of the scheme and



NFU LEGAL PANEL

Learn more about the NFU Legal Panel and how it can help you protect your business and your interests.

- 12.5% discount on hourly rates
- Fixed fees for specified services
- Act as a one-stop shop for NFU members
- Free initial report to support your LAS funding application where appropriate
- Great accessibility with at least two firms in your region
- Comprehensive advice whatever your problem – business, property or family-related
- Deliver the NFU Contract Checking Service - helping you to understand exactly what you're signing
- Deliver the NFU Legal Health Check Service - helping to identify concerns or legal matters that may need to be addressed on your farm.

NFU CONTRACT CHECKING SERVICE

How can I get help with my contract?

In today's world, we all know contracts can be complex and can often be written in language that can puzzle and confuse us. You may occasionally be asked to enter into a contract that you are not entirely sure about.

Seeking early advice before signing on the dotted line can protect you from potentially costly, lengthy and stressful legal disputes in the future. That's why the NFU in conjunction with its Legal Panel Firms is delighted to offer a Contract Checking Service to NFU Farmer & Grower members. The Legal Panel Firms can undertake the work on your behalf by offering their independent professional advice to ensure you understand your rights and obligations, and are satisfied that your aims and objectives are met before you sign the contract.

When should I get help with my contract?

- When you receive a contract from another party you are planning to trade with or buy from
- When you wish to issue a new contract yourself for a business transaction you are about to enter into with another party
- When either you or the other party propose changes to any of the terms and conditions of an existing contract.

Special Offer!
NFU Legal Assistance Scheme*
subscribers can apply for



How is the service accessed?

If you want them to, the NFU Legal Panel Firm will consider the contract in more detail and assist in renegotiating specific terms with the other party and/or advise in further detail what the contract means for your business.

NFU LEGAL HEALTH CHECK SERVICE

The NFU in conjunction with its Legal Panel Firms is pleased to offer NFU Farmer & Grower members an entirely free initial Legal Health Check in relation to their farming or growing businesses. This service aims to help identify and highlight any potential issues, legal gaps or other matters members might want to address to help secure their farming, growing or diversification businesses.

The Legal Health Check can also significantly help underpin business resilience. During the current unprecedented changing times with the future implementation of the Agricultural Transition Plan, Environmental Land Management Scheme, Lump Sum Payments to name a few, this Legal Health Check could assist in many ways - including, but not limited to, the following areas:

- Property matters (includes ownership, tenancies, land registration)
- Estate planning (includes Wills, Lasting Powers of Attorney, Trust Deeds etc.)
- Business structures
- Share farming
- Contract farming
- Rights of Way (including Section 31(6) applications)
- Succession planning
- Employment
- Diversification

How can I get a Legal Health Check?

The initial NFU Legal Health Check Service is free and is designed to provide members with a

How do I get started?

1.



Members should call NFU CallFirst on **0370 845 8458** for a free initial discussion with an NFU legal and technical adviser who will then refer you to the appropriate NFU Legal Panel Firm in your area.

2.



The NFU Legal Panel Firm will get in touch with you to have a free initial discussion. In some cases, you may also receive an online questionnaire from the firm to start the process. The questions are to assist in highlighting the areas within your business you might want to raise with them ahead of the discussion or meeting.

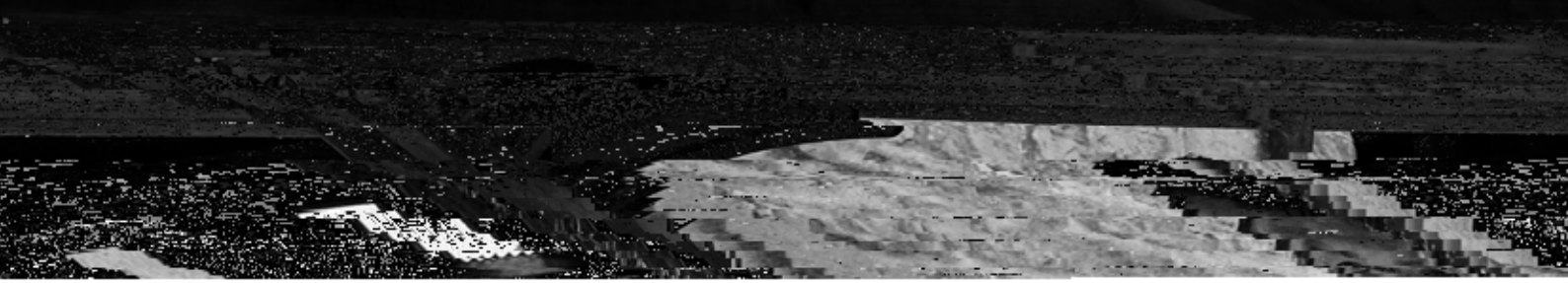


The NFU Legal Panel Firm will arrange a visit or a virtual discussion as appropriate and agreed with you. This will result in a brief outline report being produced to agree the areas identified that require some work to be carried out to put things right within the business.

Special Offer!

NFU members who subscribe to the NFU Legal Assistance Scheme* can apply for financial assistance of **£1,000** for four sets of instructions (at £250 each) generated by the Legal Health Check.

* A



"We really value the NFU Legal Assistance Scheme. We had an issue with livestock worrying where a dog attacked our sheep, losing seven. We rang the NFU who said they were more than happy to represent us from a legal perspective and they truly gave us the confidence to stand up in court and fight our case."

The Walmsley family | Lancashire

NFU LEGAL PANEL DIRECTORY

H

Northumberland, North Riding, Durham and Tyne and Wear

JACKSONS LAW FIRM

H

Hampshire, Isle of Wight, Berks, Bucks and Oxon

THRINGS SOLICITORS

Stuart Court, Salisbury Road, Romsey SO51 6DJ

Contact: Russell Reeves

E: reeves@thrings.com | T: 01794 310 300

www.thrings.com



Somerset, Dorset, Wiltshire and Gloucestershire

CLARKE WILLMOTT LLP

Blackbrook Gate, Blackbrook Park Avenue, Taunton TA1 2PG

Contact: Esther Woolford

E: Esther.Woolford@clarkewillmott.com | T: 0345 209 1840

www.clarkewillmott.com



Devon and Cornwall

FOOT ANSTEY LLP

Senate Court, Southernhay Gardens, Exeter EX1 1NT

Contact: Edward Venmore

E: edward.venmore@footanstey.com | T: 01392 685 273

www.footanstey.com



EA

Bedfordshire, Huntingdonshire, Cambridgeshire and Norfolk

HCR HEWITSONS

50-60 Station Road, Cambridge CB1 2JH

Contact: Denise Wilkinson

E: dwilkinson@hcrlaw.com | T: 01223 532 743

www.hcrlaw.com



Essex, Hertfordshire and Suffolk

TEES

Tees House, 95 London Road, Bishop's Stortford,

Hertfordshire CM23 3GW

Contact: Jason Torrance

E: jason.torrance@teeslaw.com | T: 0330 135 5797

www.teeslaw.com



Surrey, West Sussex

THRINGS SOLICITORS

Stuart Court, Salisbury Road, Romsey SO51 6DJ

Contact: Russell Reeves

E: reeves@thrings.com | T: 01794 310 300

www.thrings.com



IDLA D

Leicestershire, Northamptonshire and Rutland

JOSIAH HINCKS SOLICITORS

The Manse, 22 De Montfort Street, Leicester LE1 7GB

Contact: Andrew Eagle

E: rae@josiahhincks.co.uk | T: 0116 255 1811

www.josiahhincks.co.uk



Nottinghamshire and Lincolnshire

WILKIN CHAPMAN LLP

The Maltings, 11-15 Brayford Wharf East, Lincoln LN5 7AY

Contact: Andrew Holt

E: andrew.holt@wilkinchapman.co.uk | T: 01522 512 345

www.wilkinchapman.co.uk



Staffordshire, Shropshire and Herefordshire

LANYON BOWDLER

Chapter House North, Abbey Lawn, Abbey Foregate, Shrewsbury,
Shropshire SY2 5DE

Contact: Brian Evans

E: brian.evans@lblaw.co.uk | T: 01743 280 287

www.lblaw.co.uk



Warwickshire and Worcestershire

SHAKESPEARE MARTINEAU

Bridgeway House, Bridgeway, Stratford Upon Avon CV37 6YX

Contact: Jennie Wheildon

E: Jennie.wheildon@shma.co.uk | T: 01789 416 527

www.shma.co.uk

Derbyshire

BOWCOCK CUERDEN LLP

South Cheshire House, Manor Road, Nantwich Cheshire CW5 5LX

Contact: Lesley Smith

E: LSmith@bowcockcuerden.co.uk | T: 01270 611 106

www.bowcockcuerden.co.uk

TOGETHER, WE'RE STRONGER



NFU CallFirst 0370 845 8458



nfuonline.com | nfu-cymru.org.uk

Disclaimer: Whilst every reasonable effort has been made to ensure the accuracy of this information and content provided within this brochure at the date of publication (November 2024), no representation is made as to its correctness or completeness and no responsibility or liability is assumed for errors or omissions. The NFU acts as the third party in relation to member discount offers and reserves the right to change or remove these offers at any time. Terms and conditions may apply to professional services and member rewards, which form part of the membership offer.

NF